



**SAN FRANCISCO
CONTEMPORARY
MUSIC PLAYERS**

**WELCOME TO OUR
2022-2023 SEASON**

ERIC DUDLEY, Artistic Director
RICHARD ALDAG, Executive Director

THURS, OCTOBER 13, 2022

Image and Memory

6:45PM Pacific Gallery viewing

7:30PM Pacific Concert

at The Lab, 2948 16th St, San Francisco

TICKETS General: \$35, Student: \$15



FRANK

Each season, we embrace the Contemporary Players' deep roots as a performative presence in the museums and gallery spaces of San Francisco, and present our outstanding musicians by highlighting their individual artistry in a space surrounded by contemporary visual art. Arrive early to enjoy a glass of wine while viewing and discussing paintings by Shanna Bruschi.

Featured Players: Susan Freier, Violin; Stephen Harrison, Cello

Program

Augusta Read **THOMAS** – *Silent Moon* for violin and cello (2006)

Gabriela Lena **FRANK** – *Suite Mestiza* for Violin Solo (2017)

Sofia **GUBAIDULINA** – *Rejoice! Freue dich! Sonata* for Violin and Cello (1981)

Libby **LARSEN** – *Scudding* for solo cello (1980)

Julia **ADOLPHE** – *Smile Softly, Softly Smile* for solo violin (2021)

Erwin **SCHULHOFF** – *Duo* for Violin & Cello (1925)

SAT, NOVEMBER 5, 2022

Re-Tuning and Refiguration

7PM Pacific How Music is Made

8PM Pacific Concert

at Caroline H. Hume Concert Hall,
SF Conservatory of Music, 50 Oak Street,
San Francisco

TICKETS General: \$35, Student: \$15



JOHNSTON

The parameter of fixed pitch becomes a fluid concept in a program that surveys different tuning systems and their juxtapositions with each other, and emerging composers from SF Conservatory's Technology and Applied Composition Program respond with new works seeking innovative approaches to pitch. Pieces by American mavericks Ben **JOHNSTON** and Sky **MACKLAY** inhabit the 'notes between the notes' and alter our perceptions of how certain instruments are supposed to sound, while Korean-born composer Unsuik **CHIN** further disguises instrumental identities in a musical exploration of pantomime.

Program

Ben **JOHNSTON** – *Somewhere I Have Never Traveled* (1949)

2 Selections from the SFCM Technology & Applied Composition Program, New Work(s) (2023)

Ben **JOHNSTON** – *Sonata for Microtonal Piano* (1964)

Unsuik **CHIN** – *Cosmigimmicks* (2011-2012)

Sky **MACKLAY** – *Microvariations* (rev. 2017)



MACKLAY



SUN, DECEMBER 4, 2022

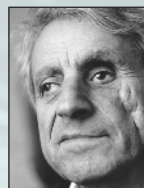
Sound Encounters III

in collaboration with Center for
New Music & Audio Technology, UC Berkeley

3PM Pacific Concert

at The Lab, 2948 16th St, San Francisco

TICKETS General: \$35, Student: \$15



XENAKIS

For a third season, we continue our highly successful partnership with local sound artists in the presentation of works in collaboration with UC Berkeley's Center for New Music and Audio Technologies (CNMAT). We invite and host a group of CNMAT-affiliated artists and encounter their works in an installation-style setting, tailored to create unique sonic environments, with the involvement of a soloist from the Contemporary Players' roster as a featured performer.

Featured Player: Richard Worn, double bass

Program

Hans Werner **HENZE** – *San Biagio 9 Agosto Ore* for solo bass (1977)

Eda **ER** – *New Work* for electronics

Kevin **LO** – *New Work* for solo bass, electronics, cameras & projection

Iannis **XENAKIS** – *Theraps* for solo bass (1976)

Aine **NAKAMURA** – *New Work* for solo voice & electronics

Richard **WORN** – *Apocoletric*, for solo double bass & electronics (2022)

SUN JANUARY 15, 2023

Fire and Water, Shadows and Dust

3:15PM Pacific Gallery Viewing

4PM Pacific Concert

at The Lab, 2948 16th St, San Francisco

TICKETS General: \$35, Student: \$15



NORRIS

We continue highlighting the individual artistry of our outstanding musicians in a space surrounded by contemporary visual art. This intimate concert experience offers the chance to encounter and discuss music and art in simultaneity, with time before the concert to view art and engage in conversation about the connection points between visual and auditory elements, followed by a performance from featured artists in our all-star cast of Contemporary Players virtuosi. Arrive early to enjoy a glass of wine while viewing artwork by an artist TBD.

Musicians: Tod Brody, flute; Meredith Clark, harp

Program

Jennifer **HIGDON** – *rapid fire* for solo flute (1992)

Suzanne **FARRIN** – *Polvere et Ombra* for solo harp (2008)

Luciano **BERIO** – *Sequenza I* for solo flute (1958)

Salvatore **SCIARRINO** – *Fauno che Fischia a un Merlo* for flute and harp (1980)

Luciano **BERIO** – *Sequenza II* for solo harp (1963)

Marcus **NORRIS** - New Work, TBD (SF Search for Scores Commissioning Prize) for solo harp

Toru **TAKEMITSU** – *Toward the Sea III*, version for alto flute and harp (1989)

Roberto **SIERRA** – Selections from *Flower Pieces* for flute and harp (1994)

SUN, FEBRUARY 26, 2023

Sound & Wine: Annual Benefit Event

3PM Pacific Concert

at The Monroe, 473 Broadway, San Francisco

TICKETS \$75



SMITH

Sound & Wine is an evening dedicated to our biggest fans: our supporters, donors, subscribers, and members, and an opportunity to connect intimately with our Contemporary Players musicians to hear their personal perspectives and unique interpretations of pieces that inspire them as artists. We invite you to bring your music-loving friends and join in conversation and performance as we celebrate in style with the most ardent members of our tight-knit community of contemporary music enthusiasts. Featuring music/food/wine/silent auction.

String Quartet of SFCMP Musicians

Program

Vijay **IYER** – *Dig the Say* (2012)

Nicole **LIZÉE** – *Another Living Soul* (2016)

Gabriella **SMITH** – *Carrot Revolution* (2015)



IYER

THURS, APRIL 13, 2023

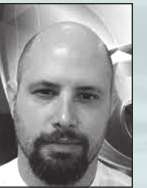
Temporal Excursions

7PM Pacific How Music is Made

8PM Pacific Concert

at Taube Atrium, 401 Van Ness Avenue,
4th Floor, San Francisco

TICKETS General: \$35, Student: \$15



BAUMBUSCH

In celebration of a special project on our 52nd season, we present a live performance experience around musical strands unfolding independently in time. A revisit of the work of Conlon **NANCARROW** affords a realization for chamber ensemble, along with the Bay Area premiere of a virtuoso work by SF Symphony Music Director Esa-Pekka **SALONEN**. The second half of the of the program features the world premiere of **BAUMBUSCH's Polytempo Music**, a multi-year project, first conceived in the isolation of the COVID-19 pandemic, for a flexibly designed ensemble to take shape in a variety of temporal modes: as a composite of separately-tracked recordings, a Virtual Reality audiovisual experience, and a live performance with real-time mixing in which our musicians occupy individualized streams in musical time.

Program

Conlon **NANCARROW**/arr. Evan **ZIPORYN** – *Study No. 3a*, arranged for ensemble (2013)

Esa-Pekka **SALONEN** - *Catch and Release* (2006)

Brian **BAUMBUSCH** – *Polytempo Music* (2023)

World premiere performance

THURS, MAY 11, 2023

Power Duos, Power Dynamics

7PM Pacific How Music is Made

8PM Pacific Concert

at Herbst Theatre, 401 Van Ness Avenue,
San Francisco

TICKETS General: \$35, Student: \$15



T. BRAXTON

This season's concluding program features powerful pieces by powerful duos - either husband and wife, or father and son— while creating a generational and collaborative dialogue between composers known for charting their own courses along cross-genre trajectories. With Anthony **BRAXTON** as the eldest voice in the mix, his son Tyondai combines his own experience into a dance-inspired musical tapestry, while Miya **MASOAKA** and George **LEWIS** offer contrasting viewpoints on group virtuosity and the nature of the performer and audience dynamic.



A. BRAXTON

Program

Miya **MASOAKA** – *The Dust and the Noise* (2013)

Aiyana **BRAUN** – New Work (TBD) (2023)

(SF Search for Scores Commissioning Prize)

George **LEWIS** – *Anthem* (2011)

Anthony **BRAXTON** – *Composition No. 152* (1991)

Tyondai **BRAXTON** – *Fly by Wire* (2014)



San Francisco Contemporary Music Players
3701 Sacramento Street #496
San Francisco, CA 94118

MAILING INFO

2022-23 SEASON

SFCMP.org

TICKETS ON SALE AT SFCMP.ORG/TICKETS

For questions, please contact
boxoffice@sfcmp.org

	Price	Receive the following
Full Subscription	\$180	6 concerts
Compose Your Own 4 Concert Subscription	\$125	4 concerts of your choosing
Student Subscription	\$75	6 concerts
General Admission	\$35	1 concert
Student	\$15	1 concert
Sound & Wine Event	\$75	Special Event admission

THANK YOU
TO OUR
SPONSORS

The Aaron Copland
Fund for Music

The Alice M. Ditson Fund

GRANTS
FOR
THE ARTS

AMPLIFICATION

ART WORKS.

Clarence E. Heller
Charitable Foundation

National
Endowment
for the Arts

THE BERNARD
OSHER
FOUNDATION

Fromm
Music Foundation

The
Ross
McKee
Foundation for the Musical Arts

“There’s a reason why SFCMP
is considered the Bay Area’s
premier new music ensemble.”

—Joshua Kosman, San Francisco Chronicle

2022-23 SEASON

